

Ashbec Sample Report #3

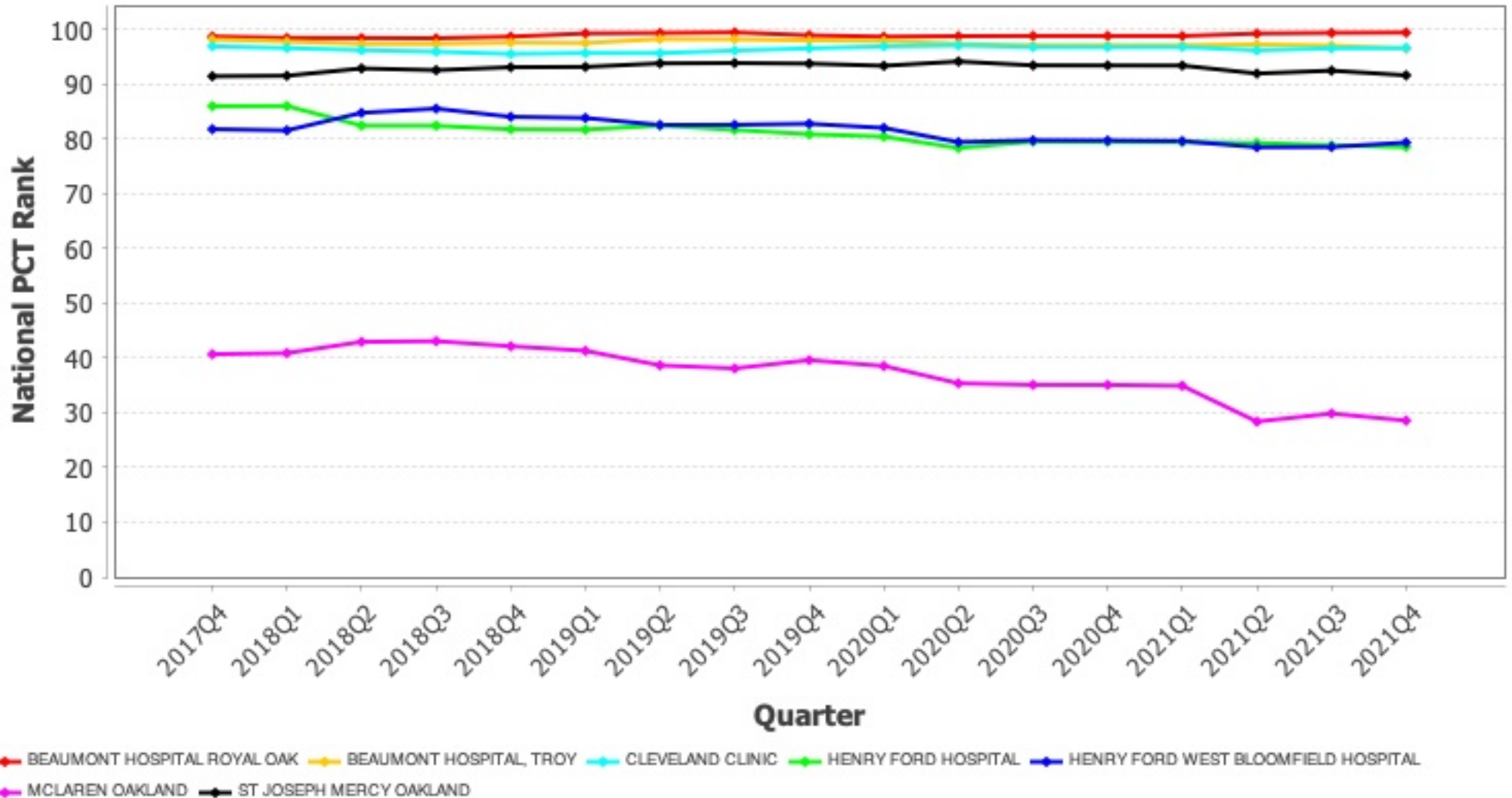
Prepared for: Ashbec LLC

Generation Date: Sep 21, 2022

This is an example of looking at competing hospitals in a geographic area.

Overall Patient Safety

This is an aggregation of patient safety measures across all available specialties.



Ashbec Sample Report #3

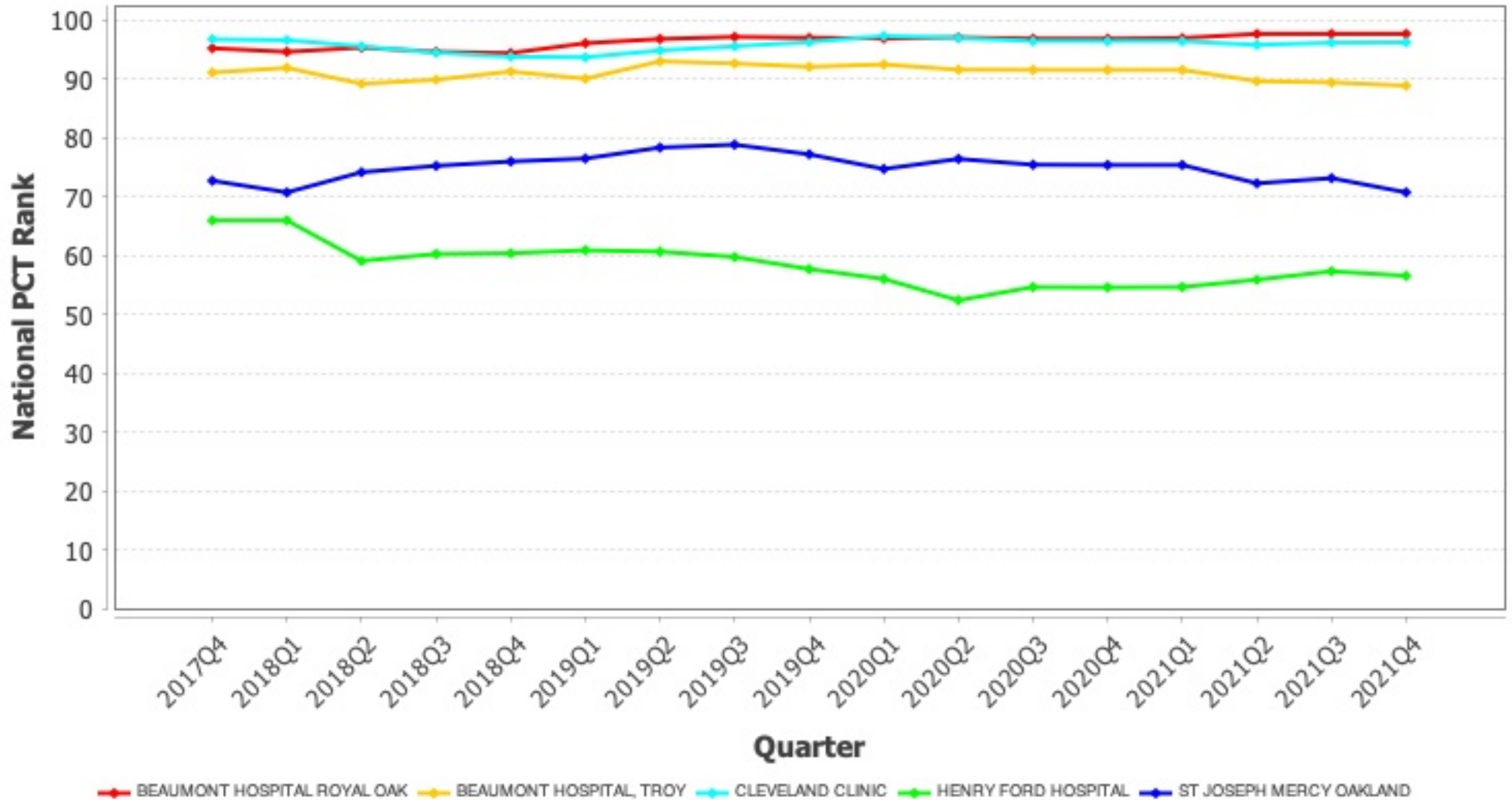
Prepared for: Ashbec LLC

Generation Date: Sep 21, 2022

This is an example of looking at competing hospitals in a geographic area.

Cardiac Patient Safety

An aggregation of patient safety measure rankings related to cardiac care.



Ashbec Sample Report #3

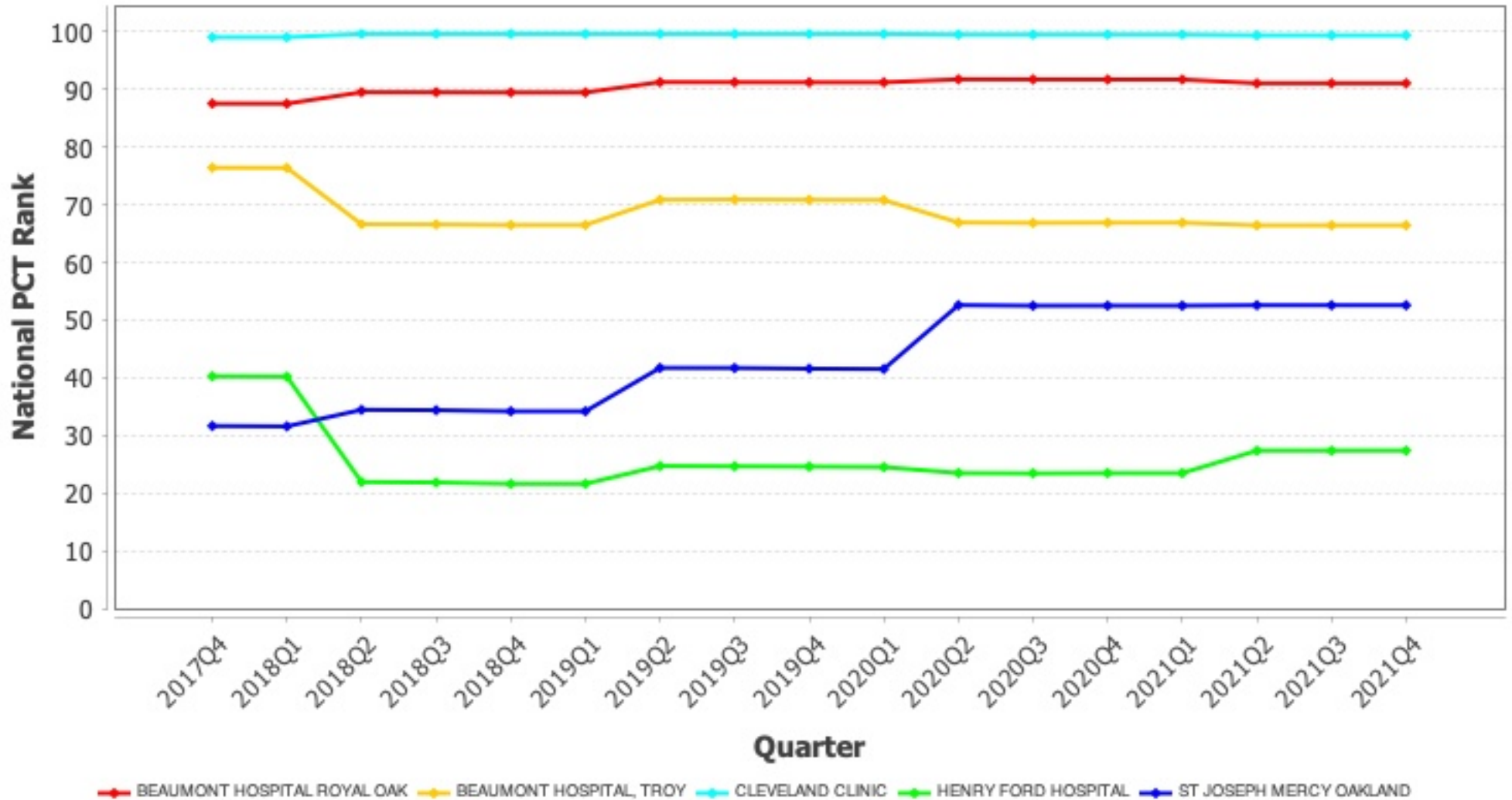
Prepared for: Ashbec LLC

Generation Date: Sep 21, 2022

This is an example of looking at competing hospitals in a geographic area.

MORT_30_CABG

Death rate for Coronary Artery Bypass Graft (CABG) surgery patients



Ashbec Sample Report #3

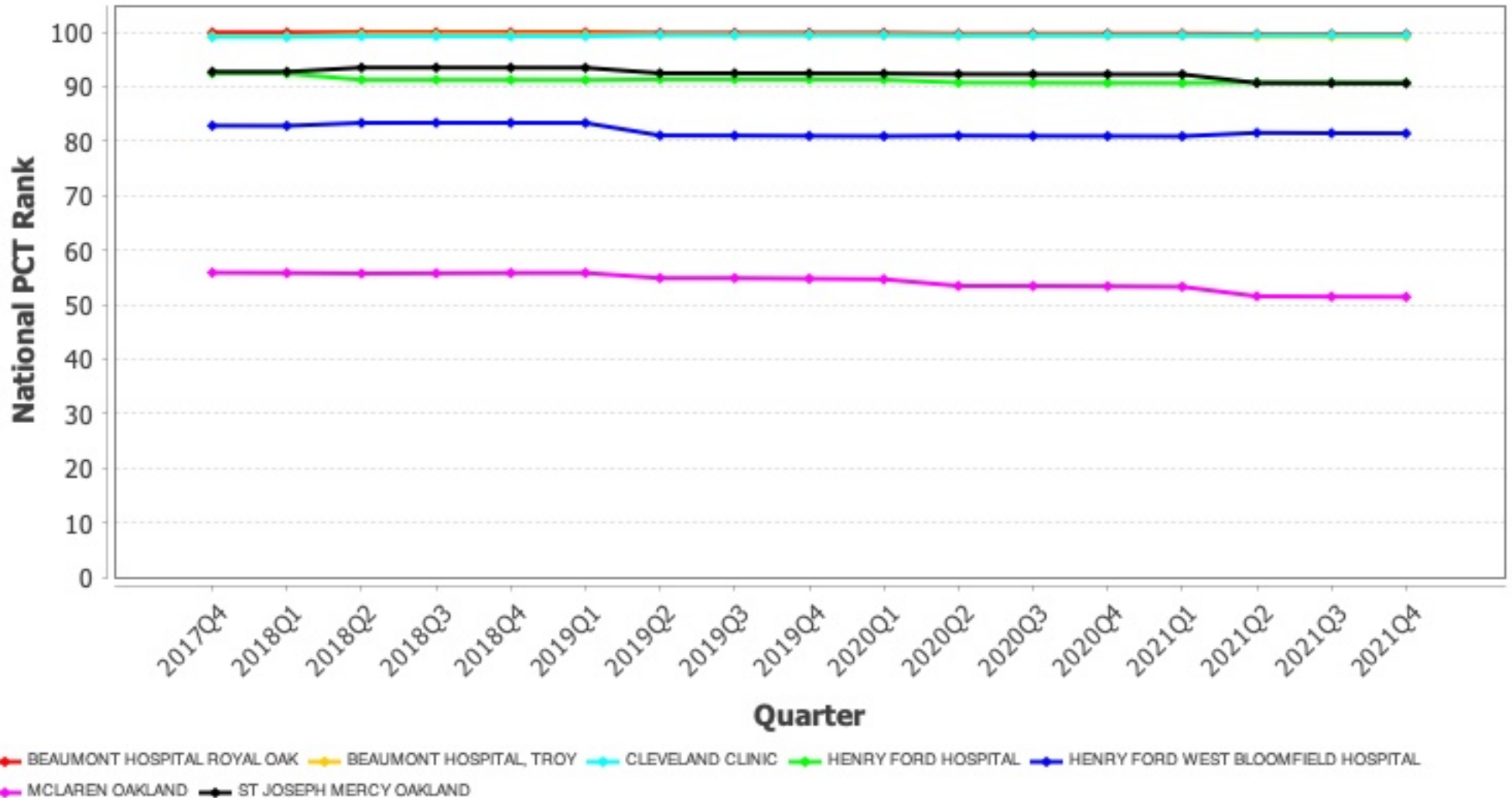
Prepared for: Ashbec LLC

Generation Date: Sep 21, 2022

This is an example of looking at competing hospitals in a geographic area.

READM_30_HOSP_WIDE

Rate of readmission after discharge from hospital (hospital-wide)



Ashbec Sample Report #3

Report Definition as of Sep 21, 2022

Report Description: This is an example of looking at competing hospitals in a geographic area.

Report Type: Graph

Aggregates

"Overall Patient Safety" contains:

Group "Injury Related Measures - Overall" - minimum measures required: 4, weighting factor: 1

Measure ID	Required?	Measure ID	Required?	Measure ID	Required?	Measure ID	Required?
COMP_HIP_KNEE	false	HAI_1_SIR	false	HAI_2_SIR	false	HAI_3_SIR	false
HAI_4_SIR	false	HAI_5_SIR	false	HAI_6_SIR	false	PSI_10_POST_KIDNEY	false
PSI_11_POST_RESP	false	PSI_12_POSTOP_PULMEMB_DVT	false	PSI_13_POST_SEPSIS	false	PSI_14_POSTOP_DEHIS	false
PSI_15_ACC_LAC	false	PSI_3_ULCER	false	PSI_6_IAT_PTX	false	PSI_8_POST_HIP	false
PSI_9_POST_HEM	false	READM_30_AMI	false	READM_30_CABG	false	READM_30_COPD	false
READM_30_HF	false	READM_30_HIP_KNEE	false	READM_30_HOSP_WIDE	false	READM_30_PN	false

Group "Mortality Related Measures - Overall" - minimum measures required: 3, weighting factor: 2

Measure ID	Required?	Measure ID	Required?	Measure ID	Required?	Measure ID	Required?
MORT_30_AMI	false	MORT_30_CABG	false	MORT_30_COPD	false	MORT_30_HF	false
MORT_30_PN	false						

"Cardiac Patient Safety" contains:

Group "Injury Related Measures - cardiac" - minimum measures required: 1, weighting factor: 1

Measure ID	Required?	Measure ID	Required?	Measure ID	Required?	Measure ID	Required?
HAI_1_SIR	false	HAI_2_SIR	false	HAI_5_SIR	false	PSI_10_POST_KIDNEY	false
PSI_11_POST_RESP	false	PSI_12_POSTOP_PULMEMB_DVT	false	PSI_13_POST_SEPSIS	false	PSI_15_ACC_LAC	false
PSI_3_ULCER	false	PSI_6_IAT_PTX	false	PSI_8_POST_HIP	false	PSI_9_POST_HEM	false
READM_30_AMI	true	READM_30_CABG	true	READM_30_HF	true	READM_30_HOSP_WIDE	true

Group "Mortality Related Measures - Cardiac" - minimum measures required: 1, weighting factor: 2

Measure ID	Required?	Measure ID	Required?	Measure ID	Required?	Measure ID	Required?
MORT_30_AMI	true	MORT_30_CABG	true	MORT_30_HF	true	MORT_30_STK	true

Measures reported individually

MORT_30_CABG	READM_30_HOSP_WIDE
--------------	--------------------

Facilities included

BEAUMONT HOSPITAL ROYAL OAK	BEAUMONT HOSPITAL, TROY	CLEVELAND CLINIC	HENRY FORD HOSPITAL
HENRY FORD WEST BLOOMFIELD HOSPITAL	MCLAREN OAKLAND	ST JOSEPH MERCY OAKLAND	